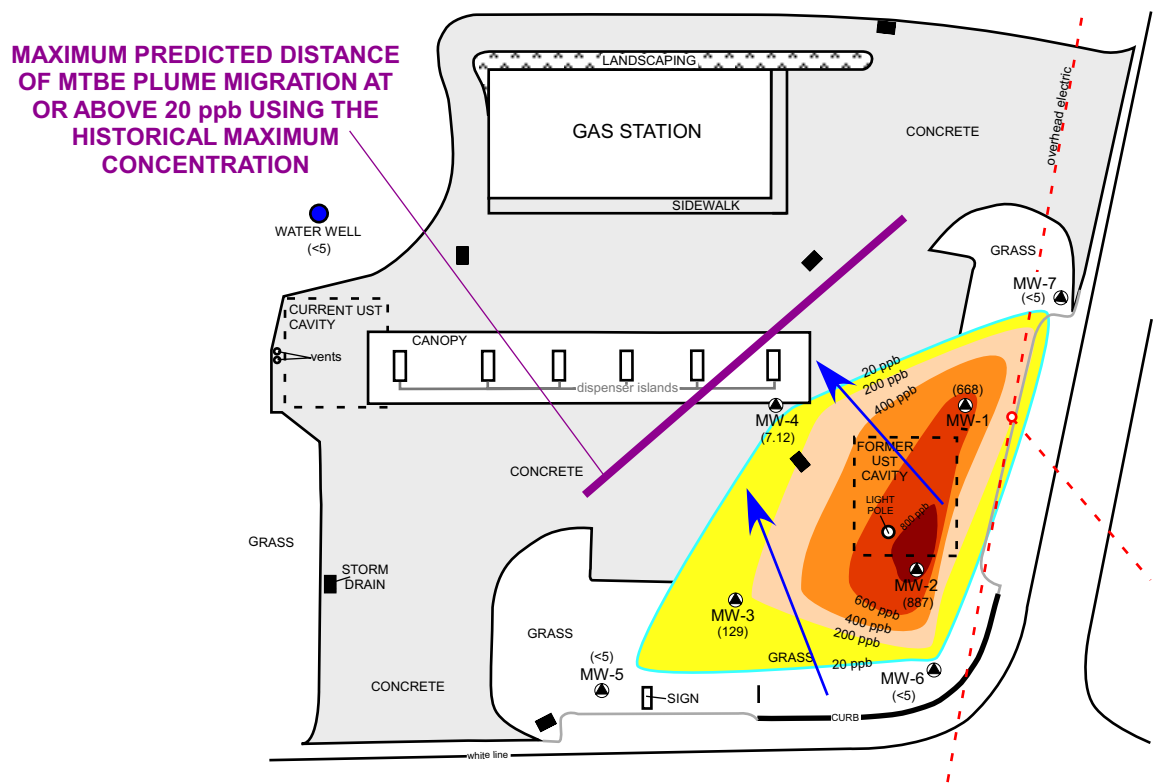




**FLYNN ENVIRONMENTAL, INC.**

**Site Characterization, New Castle, PA**

Site Characterization activities were completed at this New Castle PA station under Statewide Health Standards, with the existence of an on-site potable water well. Significant MTBE concentrations as high as 2,050 parts per billion existed in the area of the former UST cavity. Flynn chose to employ a cost and time effective approach consisting of fate and transport analytical modeling to predict the migration of contaminants in groundwater, rather than implementing a costly remediation system. Site-specific data was collected and used to develop the model, which demonstrated that the contamination would not migrate to the on-site potable water well, the nearest point of exposure. The site was then eligible for liability protection from PADEP.



- ✓ Installation and Monitoring of 8 Monitor Wells
- ✓ Collection of Site-Specific Data
- ✓ Development of Fate and Transport Analytical Model
- ✓ Completion of Site Characterization Report
- ✓ Completion of Remedial Action Completion Report
- ✓ Receipt of Liability Protection

FLYNN ENVIRONMENTAL, INC.  
 5640 Whipple Avenue, N.W.  
 North Canton, OH 44720  
 ph: 330-499-1000  
 fax: 330-499-4499

1-800-690-9409

www.flynnenvironmental.com